

CHAIR LIFT SAFETY

LOOK BACK

MOVE UP TO THE MARKED LINE
WATCH FOR THE APPROACHING CHAIR



SECURE ANY LOOSE ITEMS



REMOVE POLE STRAPS & HOLD TIPS FORWARD

LOAD & LOWER

LOAD THE CHAIR
LOWER THE BAR



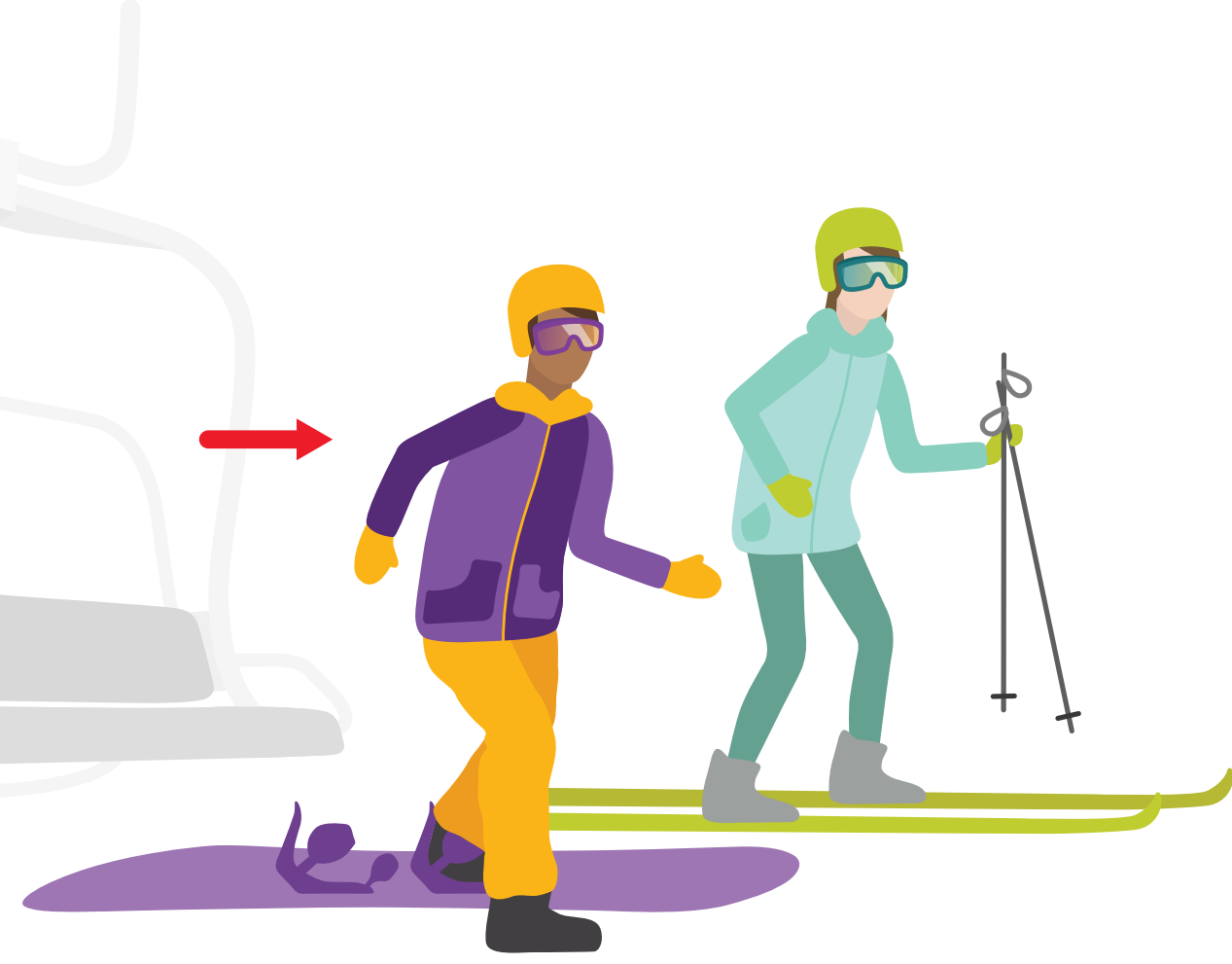
LOWER THE BAR



DO NOT SWING OR BOUNCE THE CHAIR

LIFT & LEAVE

LIFT THE BAR WHEN YOU REACH THE UNLOADING AREA
STAND UP AND CLEAR AREA



RAISE THE BAR



KEEP YOUR TIPS UP



Alberta Elevating Devices & Amusement Rides Safety Association

